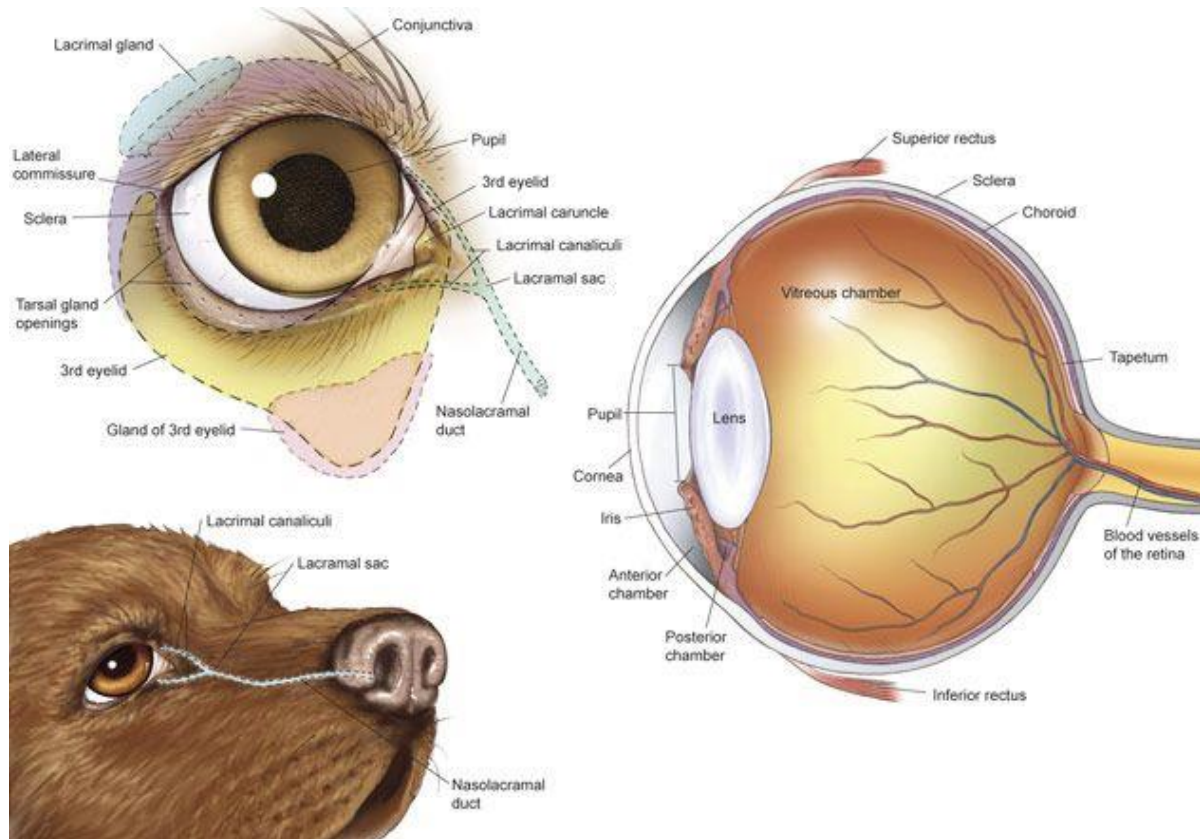




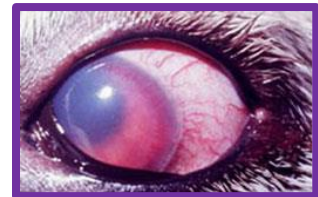
## Eyes 101

Eye health is very important and should be taken seriously. Even the slightest scratch from rough housing with a housemate can lead to big problems if not addressed promptly. I hope this article will be helpful to understanding the major diseases and injuries that are most commonly seen in vet practices.



**Diseases** (most commonly seen - For more information on each of these diseases/injuries please click on the link associated with bullet point.)

- **Glaucoma:** Increased ocular pressure within the anterior chamber. This is an emergency and should be evaluated by a vet. <http://www.eyecareforanimals.com/conditions/glaucoma/>
- **Uveitis:** Decreased ocular pressure of anterior chamber. This condition should also be brought to the attention of a vet quickly. <http://www.eyecareforanimals.com/conditions/canine-uveitis/>





Missouri German Shepherd Rescue (MoGS)  
Doggie Health & Wellness Team  
**Wellness Wednesday Series on Canine Health**

- **Cherry Eye:** Inflammation of the gland of the third eye lid causing it to seem to burst out of the corner of the eye. This is a non-life threatening condition, but can only be corrected with surgery. Also called Nictitans Gland Prolapse
- **Conjunctivitis:** Inflammation of the lining of the eyelid.  
<http://www.eyecareforanimals.com/conditions/conjunctivitis/>
- **Dry Eye:** Not enough tears are produced. Most commonly seen in small “Squished-face” (brachycephalic) breeds such as Pugs, Pekinese, Shih Tzu, etc.  
<http://www.eyecareforanimals.com/conditions/keratoconjunctivitis-sicca/>
- **Cataracts:** Cloudiness of the lens that hinders vision.  
<http://www.eyecareforanimals.com/conditions/cataracts/>
- **Ulcers:** Can start as a small imperfection on the surface of the cornea but without proper care can result in the degradation of the cornea leading to more severe problems. This can be very painful and should be evaluated by a vet for appropriate medications.  
<http://www.eyecareforanimals.com/conditions/corneal-ulcers/>
- **Proptosis:** Trauma to the head or eye causing it to pop out of its socket. This is an emergency and needs medical attention ASAP. Can also be caused by strangulation or heavy restraint. Depending on extent of proptosis the eye may or may not be able to be saved, even with quick action.



**Don't self treat** – before doing any treatments of your own, you need to see your vet to determine the disease or injury. Applying certain ointments to a diseased eye can make it worse.

- Some ointments/drops contain steroids that are useful for treating one condition but could be detrimental to healing of other problems.

### Tests

- **Stain:** a special stain is used to stain the cornea to look for ulcers/ imperfections.
- **Tonometer:** measures the ocular pressure to determine if the animal has glaucoma or uveitis.
- **Reactions:** Shining a light in the eye, tossing cotton balls near the face, and touching parts around the eye tell the vet the extent of vision and neurologic responses.
- **Tear Test:** Tests the tear production to diagnose issues with lacrimal glands and ducts.
- Vets and Specialists also have special equipment that can look into the eye to examine the tissues and structures within the globe of the eye.





Missouri German Shepherd Rescue (MoGS)  
Doggie Health & Wellness Team  
**Wellness Wednesday Series on Canine Health**

- need an expert in the Kansas City area, these guys are the ones to see: <http://www.eyecareforanimals.com/location/overland-park-practice/>

